

Operate manual & Parts manual
Hand Pallet Truck with AC Pump
AC50-H



WARNING

**Must read this manual before use
And various warning stickers on the manual
hydraulic truck.
Keep for future reference!**

Table of Contents

Safety instructions

Safety notice.....	1
--------------------	---

Instructions for use

Specifications.....	2
Install the handle.....	2
Installation Precautions.....	3
Installation steps.....	3
Handle adjustment.....	4

Maintain

Hydraulic oil.....	4
Exhaust air.....	5
Daily inspection and maintenance.....	5
lubricating.....	5

Troubleshooting	5
------------------------------	---

Parts catalog	7
----------------------------	---

Safety instructions

For your safety and proper use of the vehicle ,please read and understand this manual and all warning labels on the vehicle before the first operation .To ensure that help is available at all times ,this manual should be available for reference whenever necessary .

Note :For continuous product improvement ,the manufacturer reserves the right to change its product design and specifications without prior notice .If you want to know the latest product parameters ,please contact us .All parameters of this manual are subject to the date of publication of the manual .

1.The waste packages should be sorted and put into solid dustbins according to the materials and be collected disposal by local special environment protection bureau. To avoid pollution, it's forbidden to throw away the waste randomly.

2.To avoid pollution during the use of the products, the user should prepare some absorbable materials (scraps of wooden or dry duster cloth) to absorb leaking oil in time. To avoid second pollution to the environment, the used absorbable materials should be handed in to special departments in terms of local authorities.

Safety notice

1.It is forbidden to operate the hydraulic carrier until necessary training, full familiarity with the hydraulic carrier and authorized operation are obtained.

2.Before operation, pay attention to check the vehicle, especially the state of wheel, handle assembly, fork frame and swing rod.

3.Do not use the truck on muddy and uneven ground.

4.Do not place any part of your body near the mechanical lifting parts of the vehicle, on the loaded goods and under the fork.

5.No carrying persons.

6.The operator should wear labor protection gloves for protection.

7.Do not use this vehicle to handle loose and unbundled goods.

8.Do not overload.

9.When handling the cargo, please pay attention to place the cargo in the center of the fork, and do not put the load at the end of the fork.

10.Only when the load weight is evenly distributed on the fork, can the vehicle be used to its maximum load capacity.

11.Please make sure that the fork length is equal to or greater than the length of the pallet.

12.When not in use, please lower the fork to the lowest height.

13.In some special cases or places, the operator should be careful and operate carefully.

Instructions for use

Please read this page carefully before use to familiarize yourself with the functions and debugging methods of the machine

Specifications

Model No.	AC50-H
Capacity (Kg)	5000
Total lift height (mm)	195
Lowered fork height (mm)	85
Fork length (mm)	1150/1220/1500/1800/2000
Width over the forks (mm)	550/685
Steering wheel (mm)	Φ200X50
Fork wheel (mm)	Φ80X75
Truck weight (Kg)	128

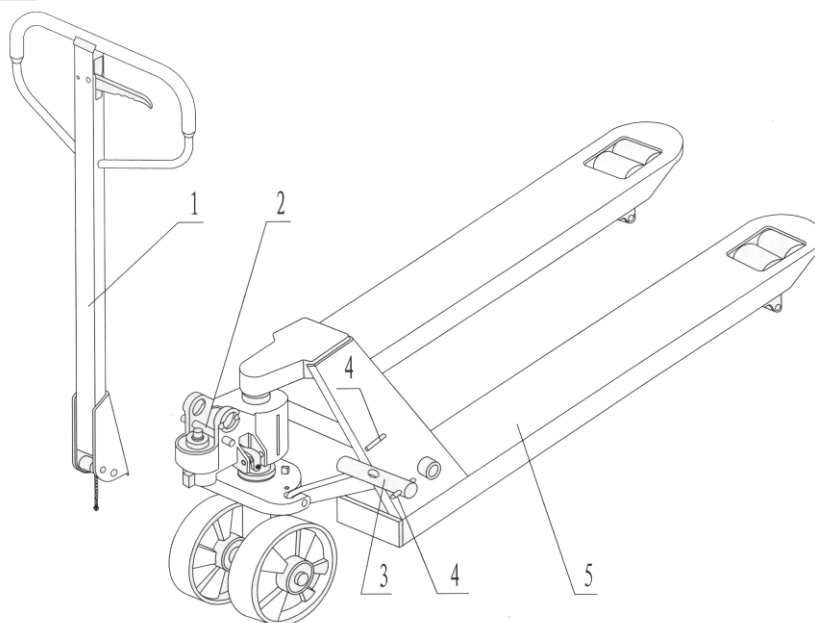
The company also provides special specifications of fork length, such as: 800,900,950,1000,1500,2000mm.

Materials and specifications are subject to change without prior notice.

Install the handle

If you purchase a manual hydraulic truck packed with wooden pallet, you need to do some simple installation before using it. During installation, you may need some tools, such as a hammer, a pair of pliers, etc.; in addition, you need some accessories: a shaft with hole, two elastic pins (Note: one has been installed on the shaft (230)), both of which are packed in a plastic bag and wrapped on the handle with tape.

Note: the number on the handle wrapping paper must be consistent with that on the frame body wrapping paper.



chapter. 1

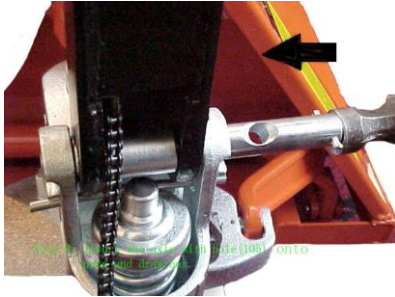
1. handle 2. Dowel pin 3. Perforated pin 4. Spring pin 5. 1 Chassis

Installation Precautions

When you install the handle, it is better to squat at the rear of the vehicle, and then install it according to the following steps:

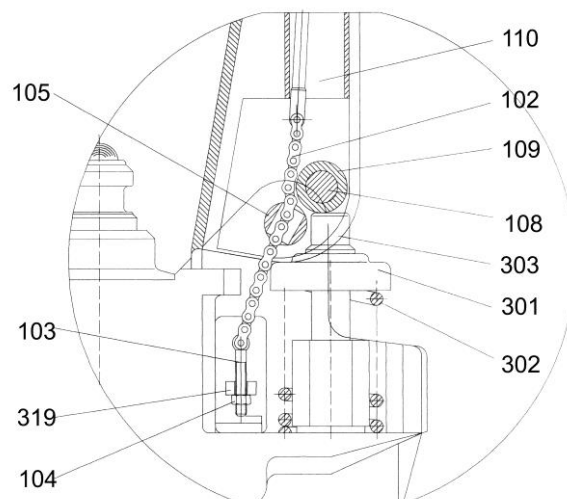
Installation steps

1. Place the handle on the small piston (303) and tap with a hammer so that the perforated shaft (230) enters the hydraulic oil pump and handle from right to left. (see Figure 2)



chapter. 2

2. Place the control handle (117 or 120g) to the "down" position and allow the adjusting bolt (103), adjusting nut (104) and chain (102) to pass through the central hole of the shaft (230).



chapter. 3

3. Press down the handle (110,) and remove the pin (#2) (see Fig. 1)

4. Put the control handle (117 or 120g) to the "lifting" position, pull up the swing rod (319), put the adjusting bolt (103) into the slot at the front end, and let the adjusting nut (104) stick to the lower end (319) of the swing rod.

5. Drive the elastic pin (231) into the perforated pin shaft (230) with a hammer.
So the handle is installed.

Adjustment of three positions (up, middle and down) of finger handle

On the handle of the carrier, you will see that the finger control handle has three position states, and its functions are as follows

Raise - control the handle at the lower part. When the handle is swinging up and down, the fork will rise.

Neutral- the control handle is in the middle. Swing the handle up and down. The fork does not rise or fall. It is used to pull the vehicle.

Lower- the control handle is on the upper part. At this time, the fork descends. Release the control handle and return to the middle position automatically.

The three positions of the finger handle have been adjusted before delivery. If there is any change due to unexpected reasons, the following steps can be followed:

1.if the finger control handle is pressed in the middle position and the forklift rises, turn the adjusting screw (318) or the adjusting nut (104) on the adjusting bolt (103) clockwise until the fork does not rise or fall when pressing.

2.if the fork is lowered when the finger control handle is in the middle position, turn the adjusting screw (318) or adjusting nut (104) anticlockwise until the fork does not descend.

3.When the finger control handle (117 or 120g) is in the down position and the fork does not descend, turn the adjusting screw (318) or the adjusting nut (104) clockwise until the fork is lowered when the finger control handle is in this position. Then check the middle position according to items 3.1 and 3.2 to ensure the correct function of the middle position.

4.If the finger control handle is pressed at the rising position, the fork will not rise. Turn the adjusting screw (318) or adjusting nut (104) anticlockwise until the fork rises. Then according to 3.1, 3.2 and 3.3, check whether the function of descending and median is normal.

Maintain

In order to ensure that the machine can be used normally, please follow the maintenance instructions below for machine maintenance.

Hydraulic oil

Check the oil quantity every six months. The total amount is about 0.3 liters. Select hydraulic oil according to the table below

Temperature	Hydraulic oil
-20°C~+40°C	L-HV46 Hydraulic oil

Exhaust air

Air may find its way into the pump during transportation, tilting or usage on uneven ground. It can result in not elevating forks whilst pumping in the Raise position. The air can be removed in the following way: Move the control handle (117 or 120G) to the Lower position, then move the tiller down several times(110). Thereafter normal operation can be resumed.

Daily inspection and maintenance

The daily inspection and maintenance of the manual hydraulic carrier can improve the service life of the vehicle. Special attention should be paid to the wheels and axles to check whether there are cotton strips, etc., which will entangle the wheels. After the operation, the goods on the fork should be unloaded and the fork should be lowered to the lowest position.

Lubricating

All bearings and shafts are provided with long-life grease at the factory. Long-life grease should be applied to the lubrication points at monthly intervals or after each time the truck is cleaned.

Troubleshooting

Number	Fault description	Dause	Treatment method
1	Fork frame can not reach the highest height,	-Hydraulic oil is not enough	Add oil
2	Fork cannot be raised	-No hydraulic oil -The hydraulic oil is impure -The adjusting nut (104) is too high or the adjusting screw (318) is too close, causing the release valve to open -Air in hydraulic oil	-Add oil -Change hydraulic oil -Readjust adjusting nut (104) or adjusting screw (318) (see 3.4) -Exhaust air (see 4.2)
3	The fork frame cannot be lowered..	-The large piston (328) or pump body (322) is damaged due to the goods being placed to one side or overloaded -When the fork frame is in the elevated position for a long time, the large piston is exposed and rusted, which hinders the piston movement. -The adjusting nut (104) or adjusting screw (318) is not in the correct position.	-Replace large piston (328) or oil pump body (322) -When not in use, please lower the fork bracket to the lowest position and lubricate the piston rod in time. -Readjust adjusting nut (104) or adjusting screw (318) (see 3.3)
4	Oil leakage	-Eal aging or damage -Some parts break -	-Renew -Update
5	Fork self lowering	-Hydraulic oil impurity causes the -Release valve cannot be closed tightly -Some parts of the hydraulic system are broken or damaged -Air mixed into the hydraulic oil -Seal aging or damage -Adjusting nut (104) or adjusting screw (318) not in correct position	-Oil change -Check and renew -Exhaust air (see 4.2) -Renew it -Readjust adjusting nut (104) or adjusting screw (318) (see 3.2)

Note: Do not attempt to repair the hydraulic truck without special training.

Fig. 4

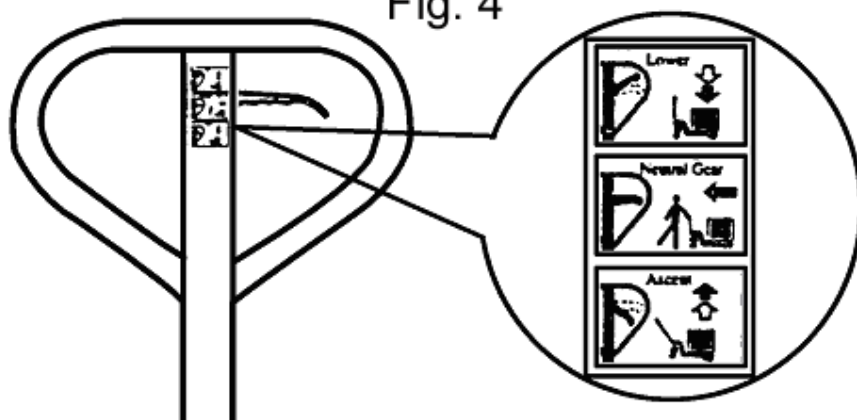
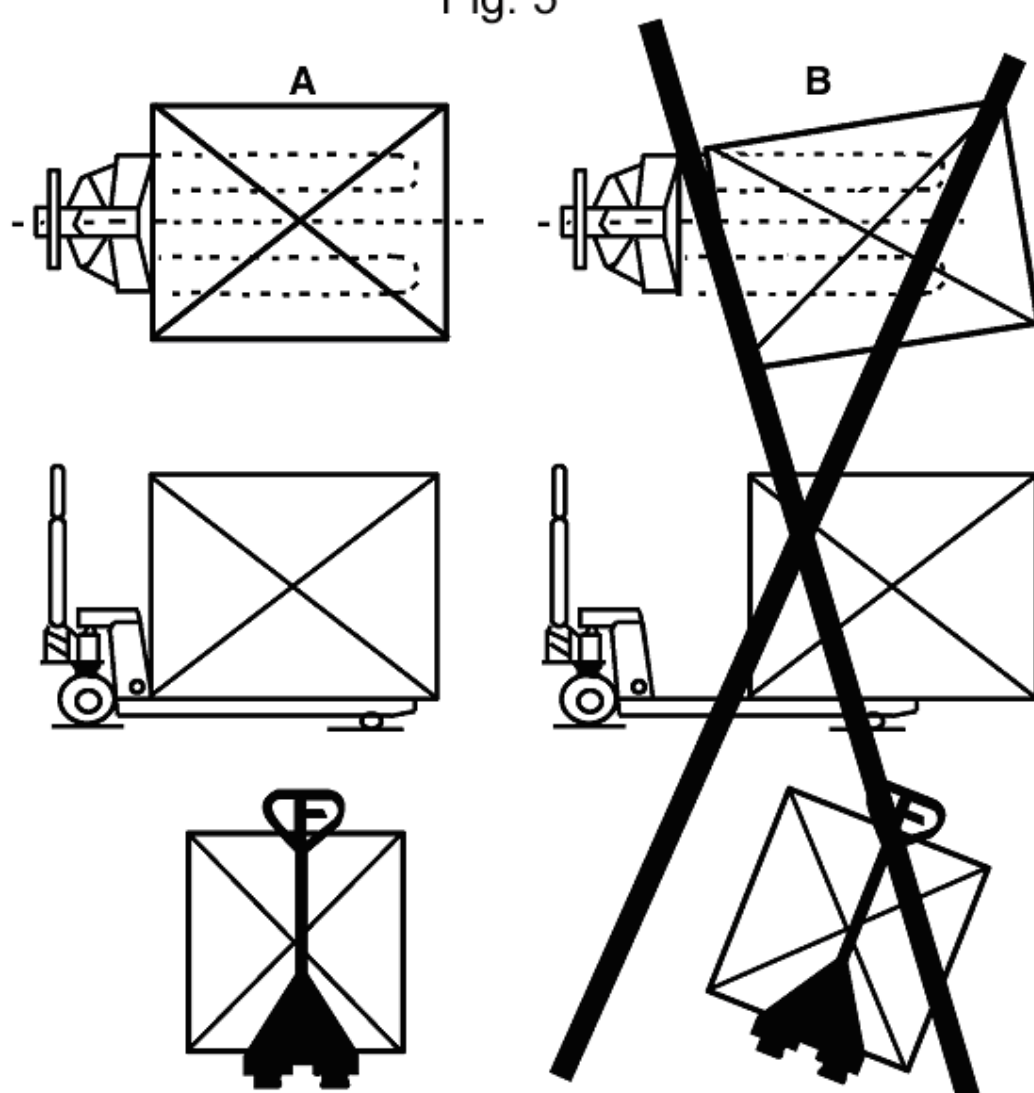
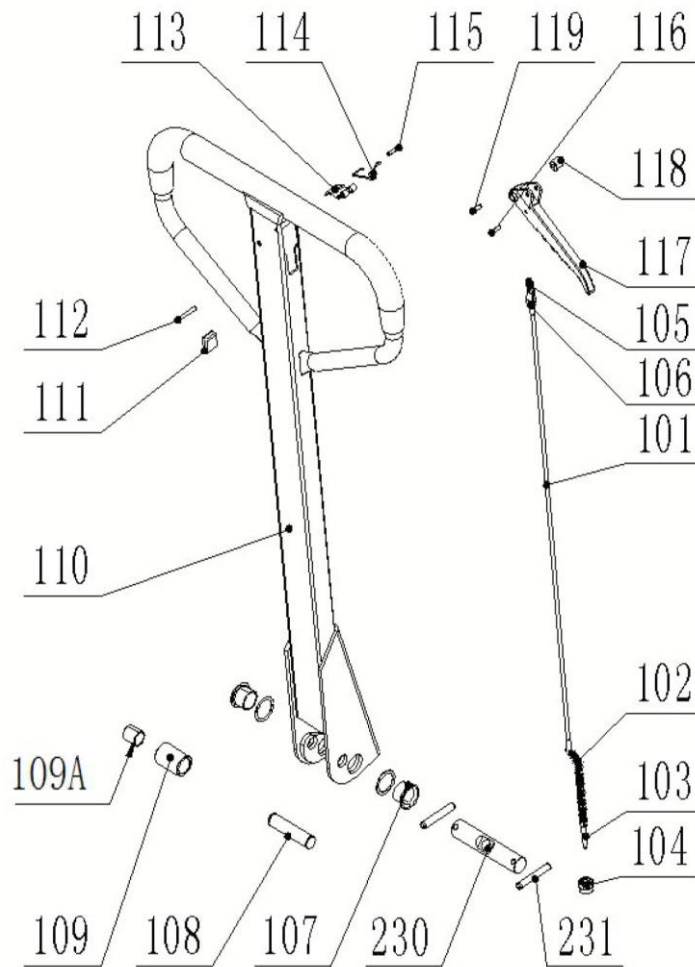


Fig. 5

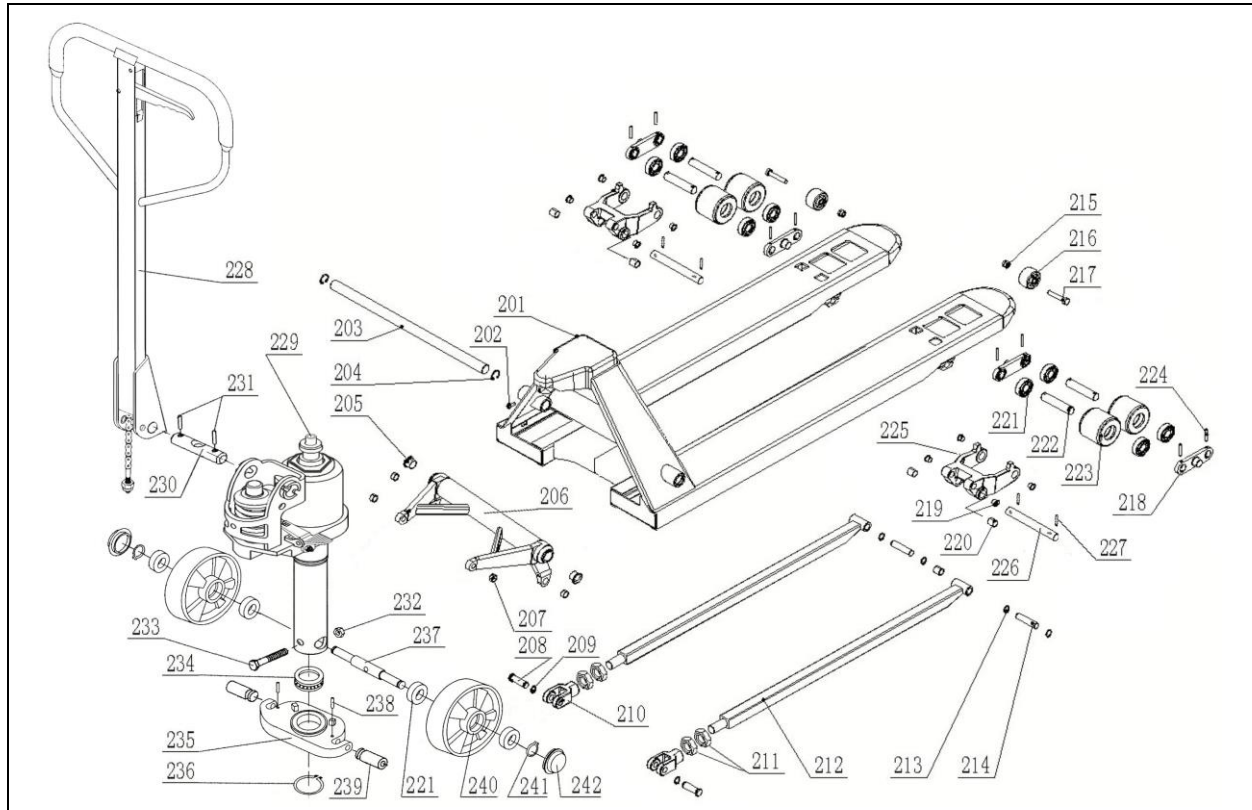


1, Handle parts



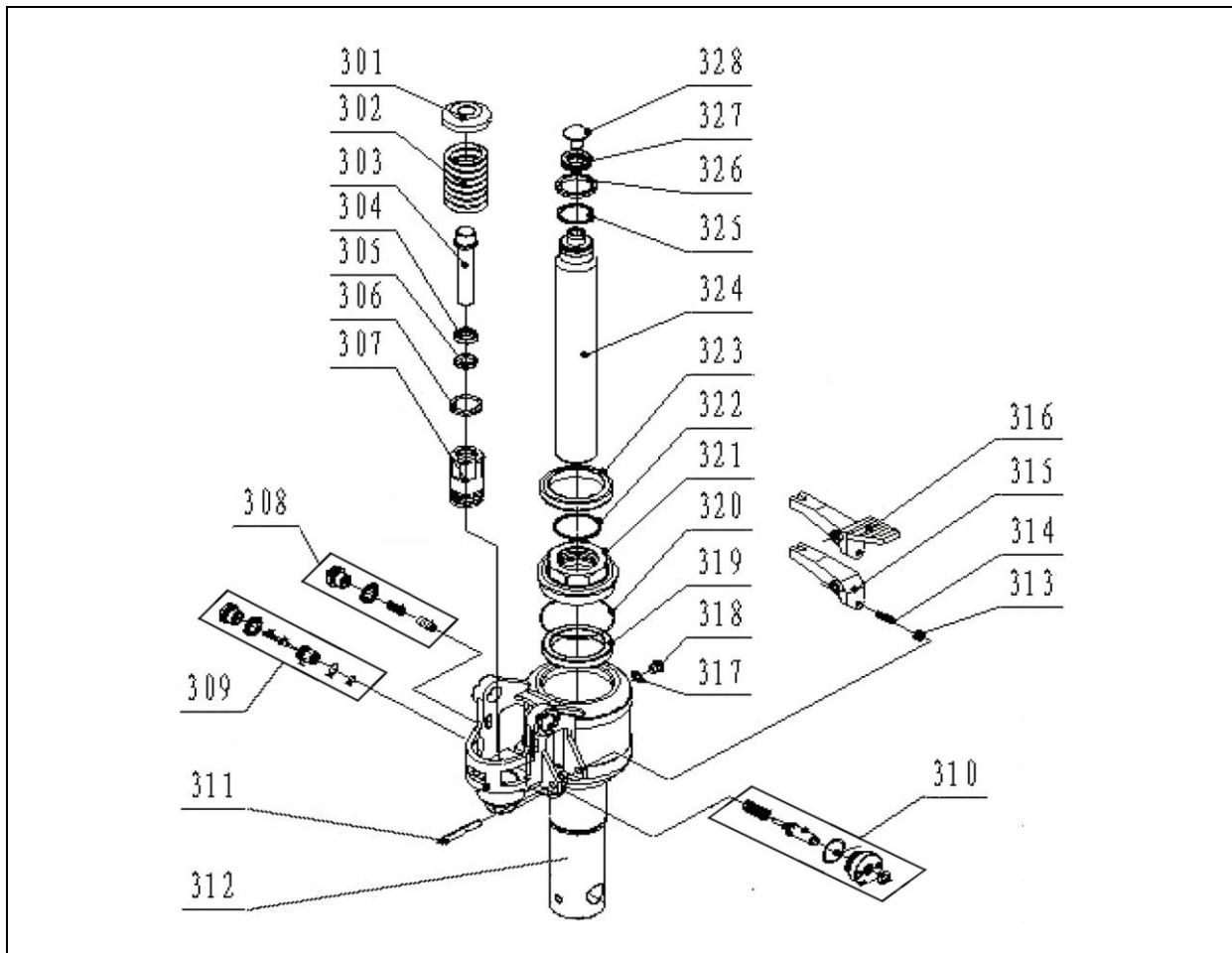
Item	Parts No.	Parts details	Qty.	Item	Parts No.	Parts details	Qty.
101	28010101	Long connecting rod	1	110	28010110	Handle body	1
102	28010102	Roller chain	1	111	28010111	Rubber blanket	1
103	28010103	Adjust bolt	1	112	28010112	Spring pin	1
104	28010104	Adjust nut	1	113	28010113	Blade Spring	1
105	28010105	Connecting plate	1	114	28010114	Torsional spring	1
106	28010106	Plat conical head rivet	1	115	28010115	Spring pin	1
107	28010107	Bushing	2	116	28010116	Spring pin	1
108	28010108	Roller pin	1	117	28010117	The finger handle	1
109	28010109	Pinch roller	1	118	28010118	Idler wheel	1
109A	28010120	Bushing	1	119	28010119	Spring pin	1

2, Truck chassis parts



Item	Parts No.	Parts details	Qty.	Item	Parts No.	Parts details	Qty.
201	28010201	Chasis and forks	1	221	28010221	Bearing 6204	8/12
202	28010202	Bolt	1	222	28010222	Pin shaft 20*101	4
203	28010203	Long axis 685	1	223	28010223	Double loading wheel	4
	28010203-1	Long axis 550	1	224	28010224	Spring pin	2
204	28010204	Circlip	2	225	28010225	Wheel fork	2
205	28010205	Bushing	2	226	28010226	Pin shaft 20*170	4
206	28010206	Rocker arm 685	1	227	28010227	Spring pin	2
	28010206-1	Rocker arm 550	1	228	28010228	Handle assy.	1
207	28010207	Bushing	4	229	28010229	Pump assy.	1
208	28010208	Connecting pin 16*60	2	230	28010230	Handle perforated pin	1
209	28010209	Check ring	2	231	28010231	Spring pin	2
210	28010210	The push rod fork	2	232	28010232	Caulking nut	1
211	28010211	Nut	4	233	28010233	Bolt	1
212	28010212	Push rod	2	234	28010234	Bearing	1
213	28010213	Circlip	4	235	28010235	Thrust strip	1
214	28010214	Shaft 16*112	2	236	28010236	Circlip	1
215	28010215	Caulking nut	2	237	28010237	Shaft for steering wheel	1
216	28010216	Truckle	2	238	28010238	Spring pin	2
217	28010217	Bolt	2	239	28010239	Pin shaft 16*52	2
218	28010218	Three consecutive plate	4	240	28010240	Steering wheel	2
219	28010219	Bushing	8	241	28010241	Scraper seal	2
220	28010220	Bushing	2	242	28010242	Retaining ring	2

3, Pump parts



Item	Parts No.	Parts details	Qty.	Item	Parts No.	Parts details	Qty.
301	28010301	Spring cover	1	315	28010315	Lever plate A type	1
302	28010302	Big spring	1	316	28010316	Lever plate B type(STD)	1
303	28010303	Small piston rod	1	317	28010317	Combination washer	1
304	28010304	Scraper seal	1	318	28010318	Plug	1
305	28010305	Y type circle	1	319	28010319	Scraper seal	1
306	28010306	Dust cap	1	320	28010320	O-Ring	1
307	28010307	Pump body	1	321	28010321	Cylinder cap	1
308	28010308	Safety valve assy.	1	322	28010322	O-Ring	1
309	28010309	Check valve assy.	1	323	28010323	Seal	1
310	28010310	Relief valve assy.	1	324	28010324	Piston rod	1
311	28010311	Spring pin	1	325	28010325	Circlip	1
312	28010312	Pump Base	1	326	28010326	Gasket	1
313	28010313	Nut	1	327	28010327	Bearing	1
314	28010314	Regulate screw	1	328	28010328	Top cap	1